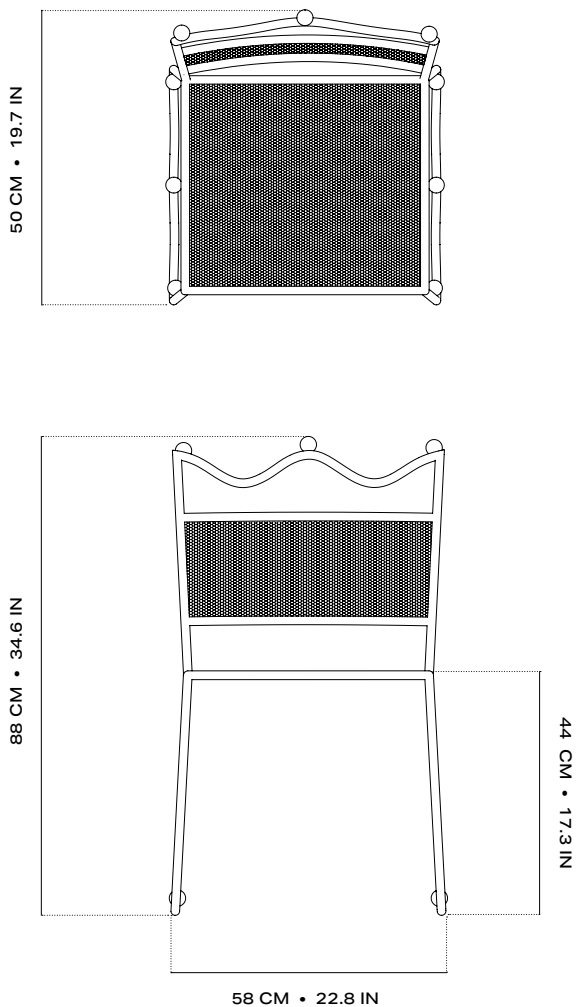


1/2
OBJECT SHEET

REINE CHAIR

The Reine chair, with its undulating lines and spherical ornamentation, is designed for both indoor and outdoor use. The seat and backrest are covered with removable and washable cushions.



DETAILS

MATERIALS

WROUGHT IRON, INDOOR/OUTDOOR FABRIC

WEIGHT

8 KG

LEAD TIME

12 TO 14 WEEKS

PRODUCTION

FRANCE

REINE CHAIR

METAL



HIGH-GLOSS WHITE LACQUER



HIGH-GLOSS BLACK LACQUER

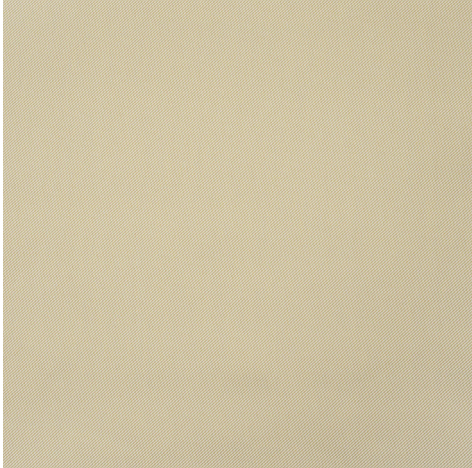
FABRIC



GOLF, LINEN - PIERRE FREY
The full range of colors is available



AMALFI, INDOOR/OUTDOOR - JIM THOMPSON
The full range of colors is available



SERGE, INDOOR/OUTDOOR - JIM THOMPSON
The full range of colors is available